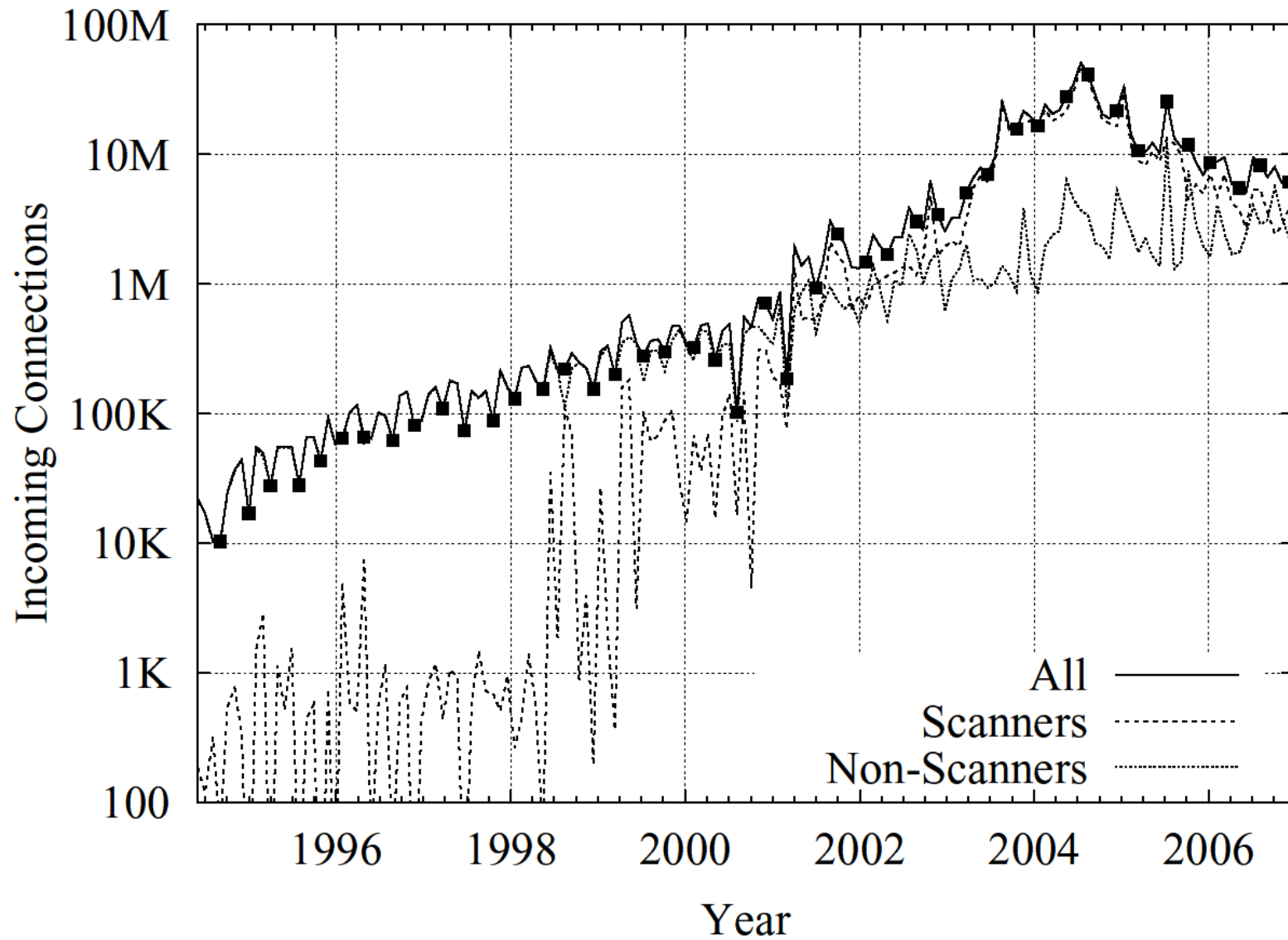
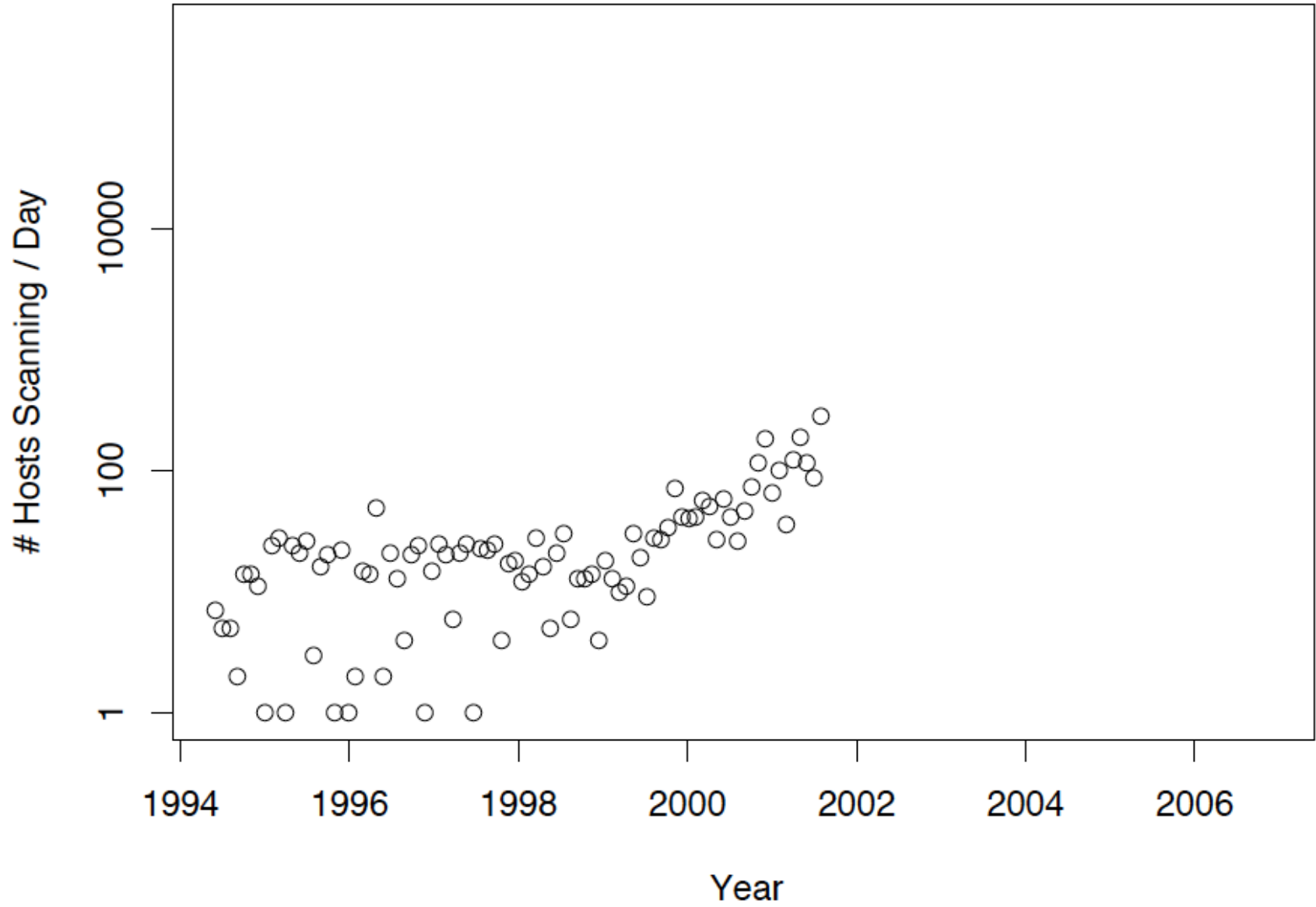


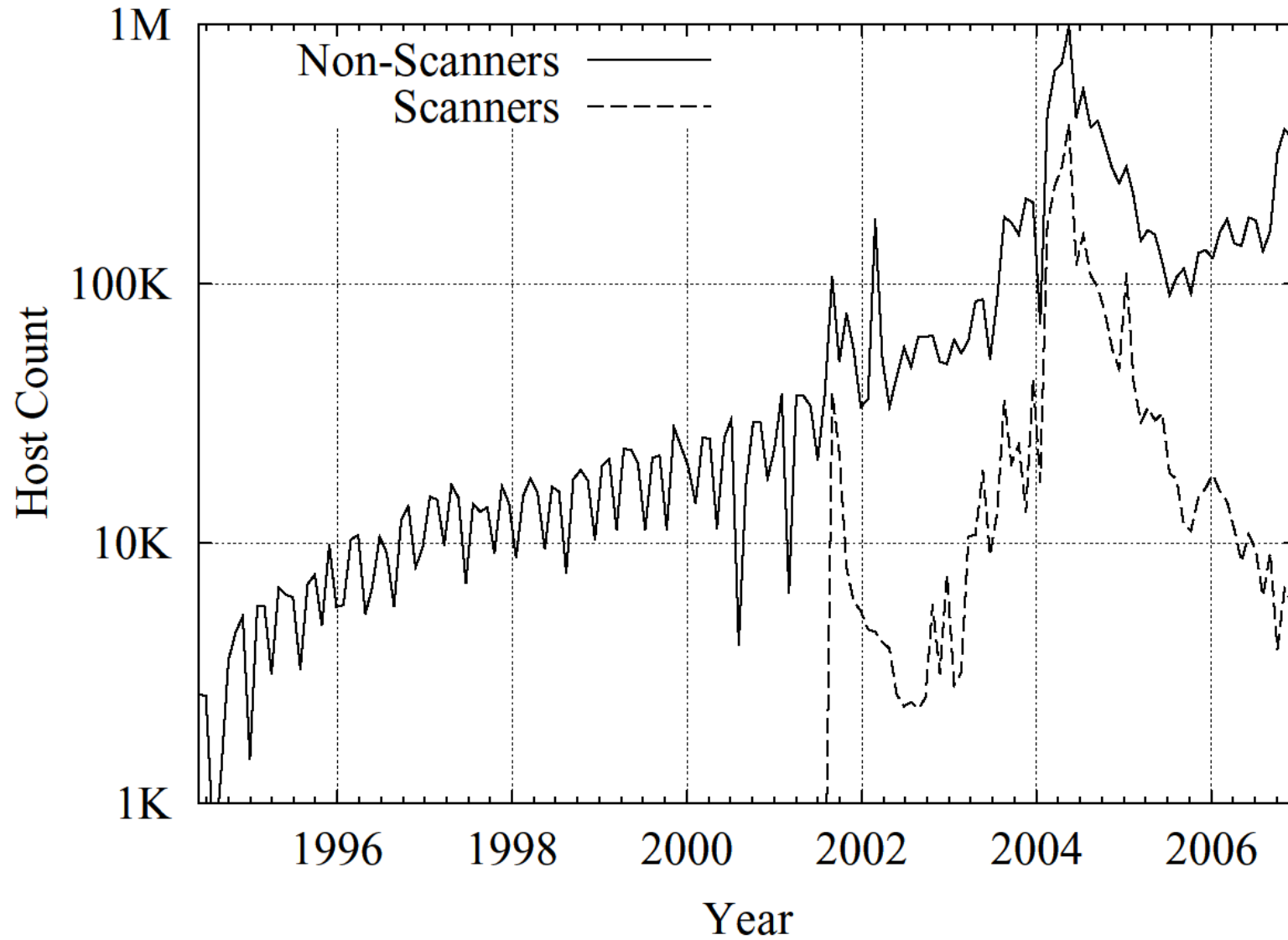
Scanning Activity Seen @ LBNL



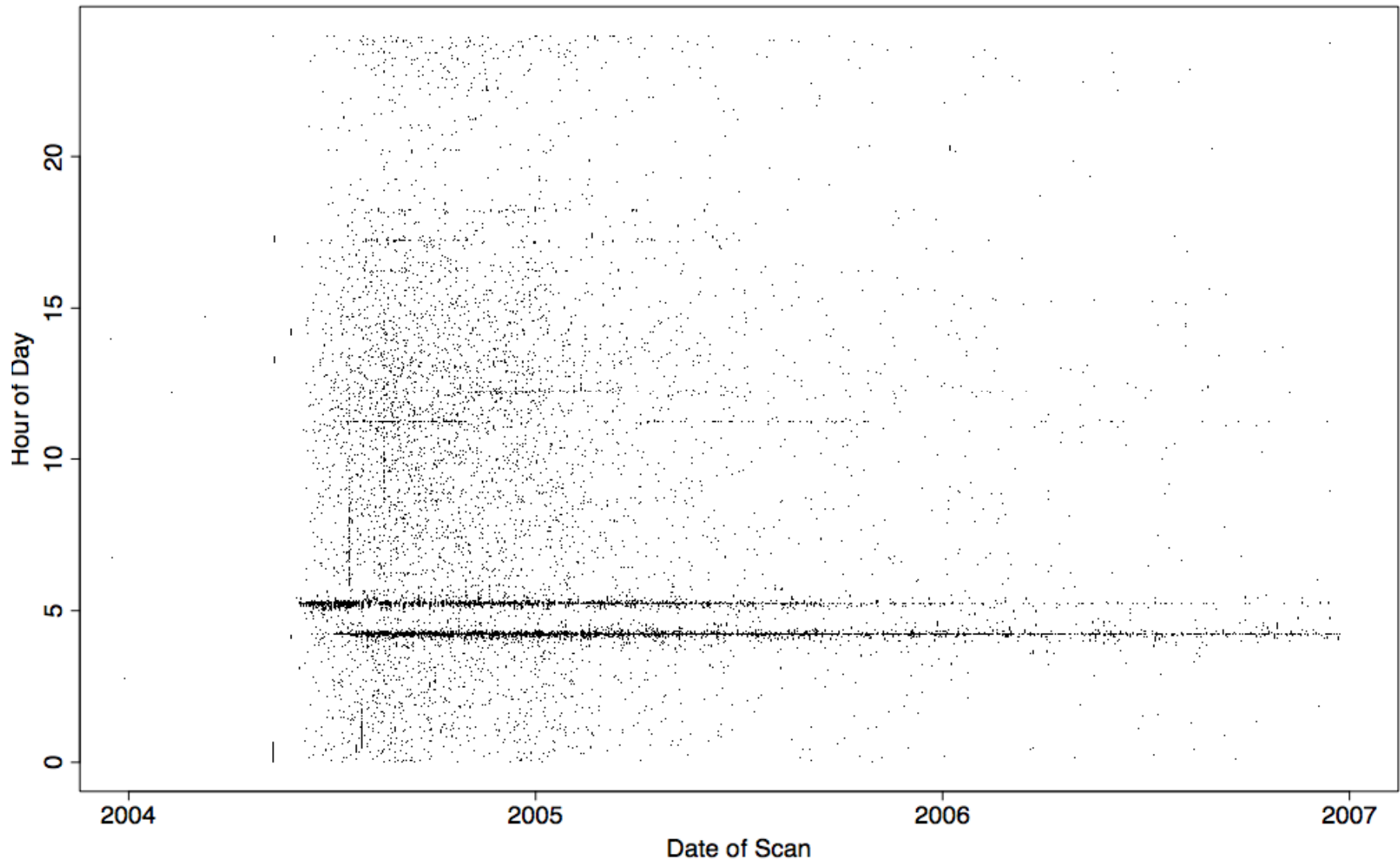
Scan Activity Seen At LBL



Scanning Hosts Seen @ LBNL

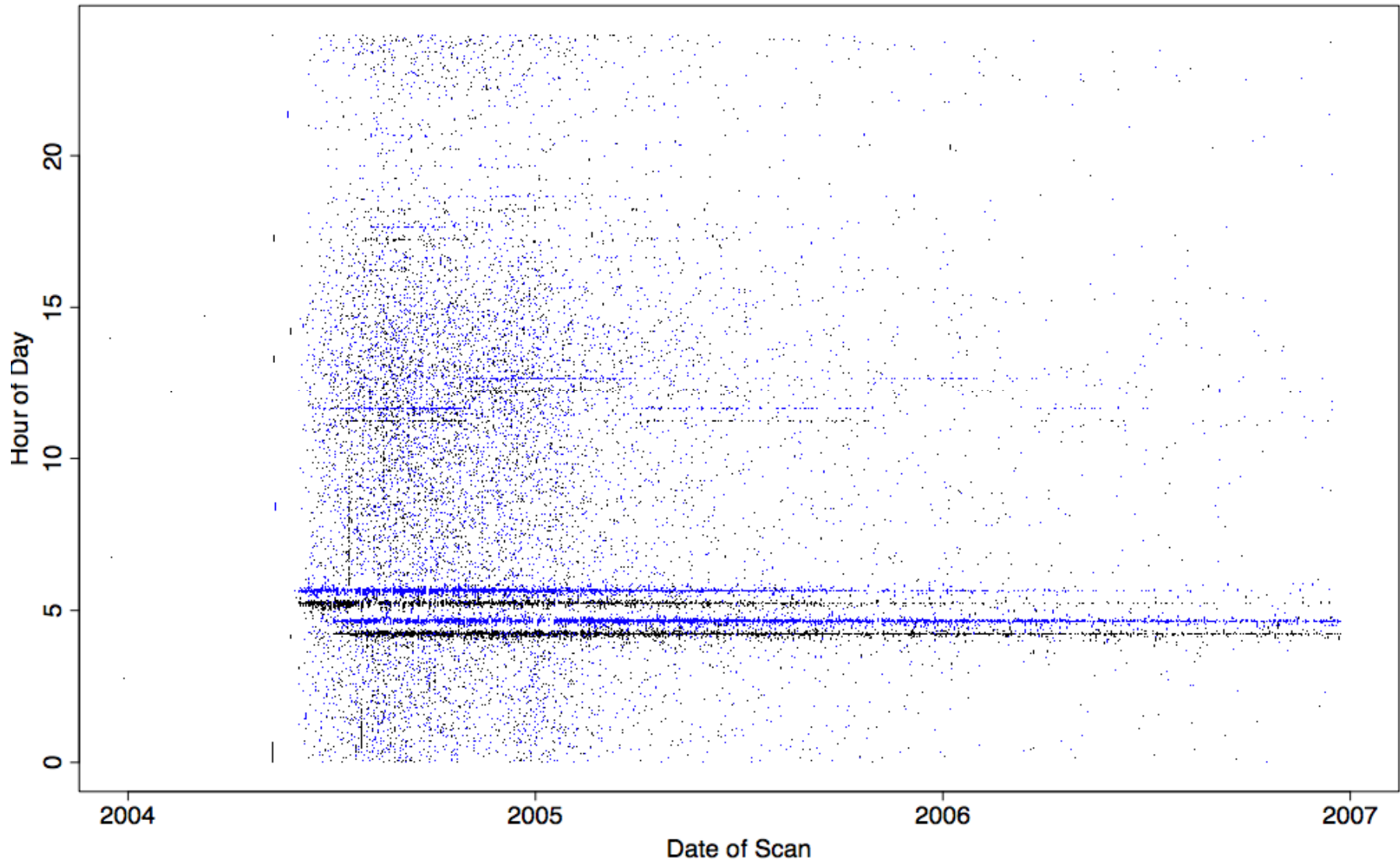


Daily Patterns Seen in 1023/TCP Scans

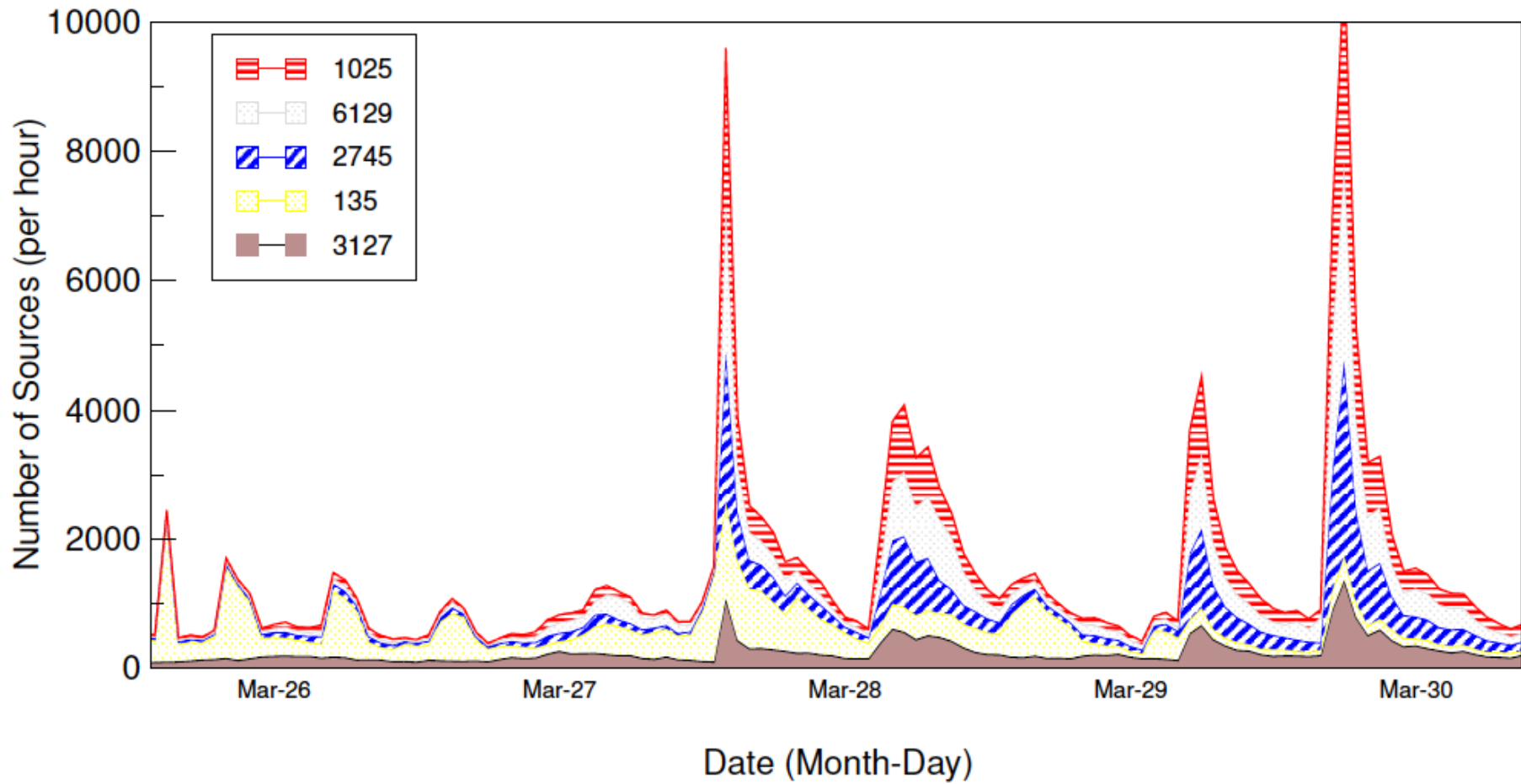


/16 at LBL, sampled 1-in-1K

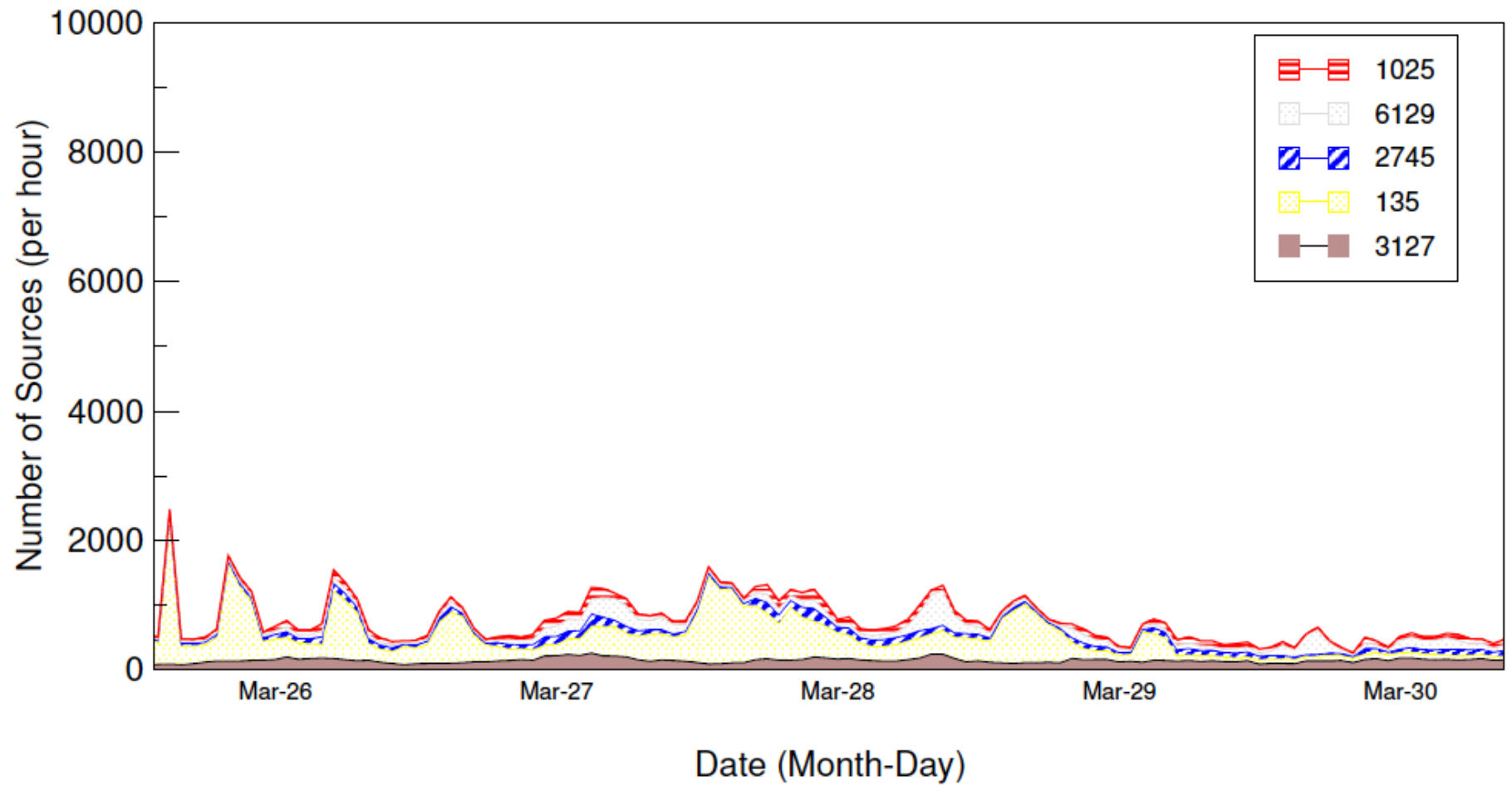
Daily Patterns Seen in 1023/TCP Scans



/16 at LBL, sampled 1-in-1K
2nd /16, sampled 1-in-1K

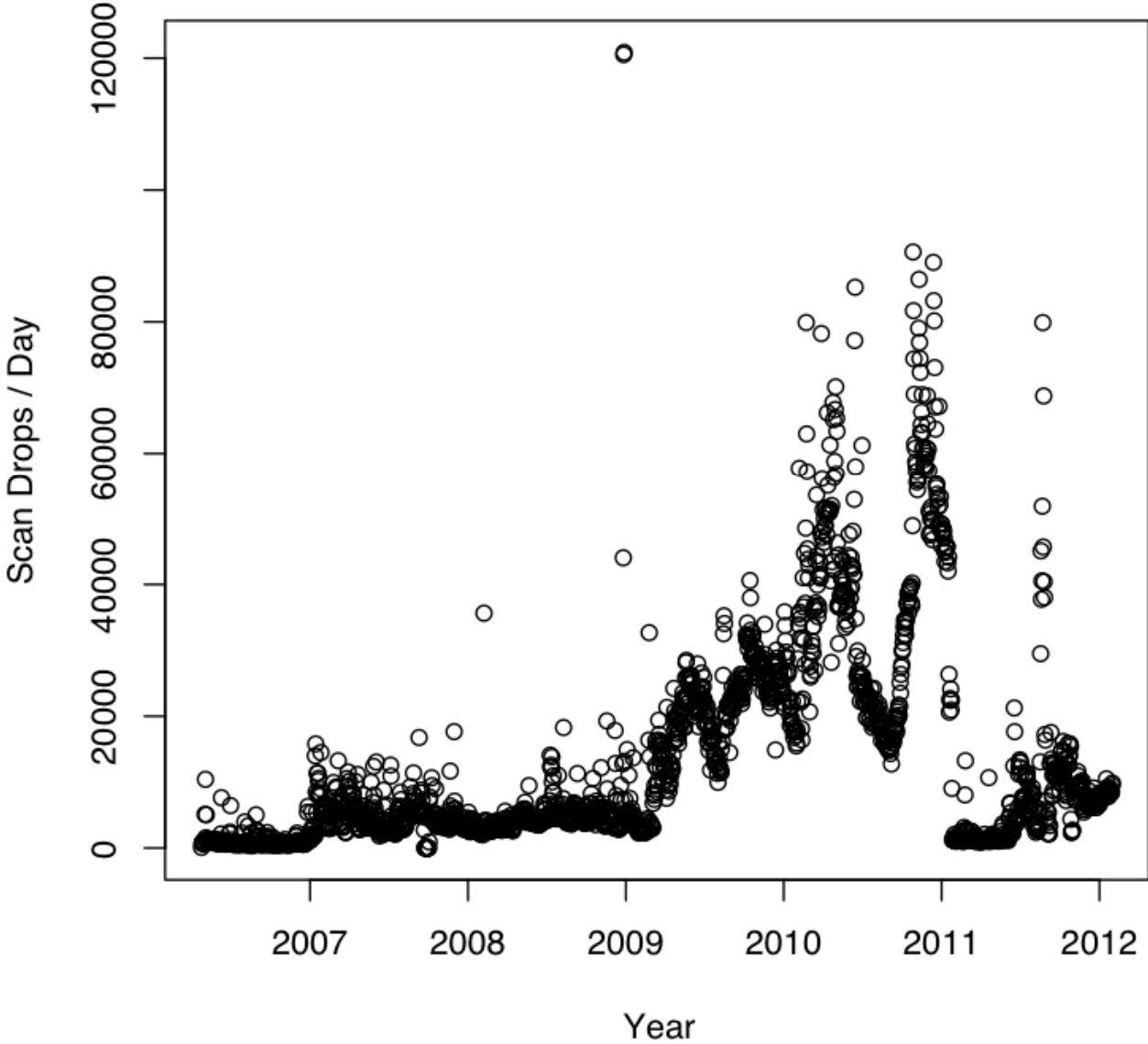


(a) Agobot Sources: UW I

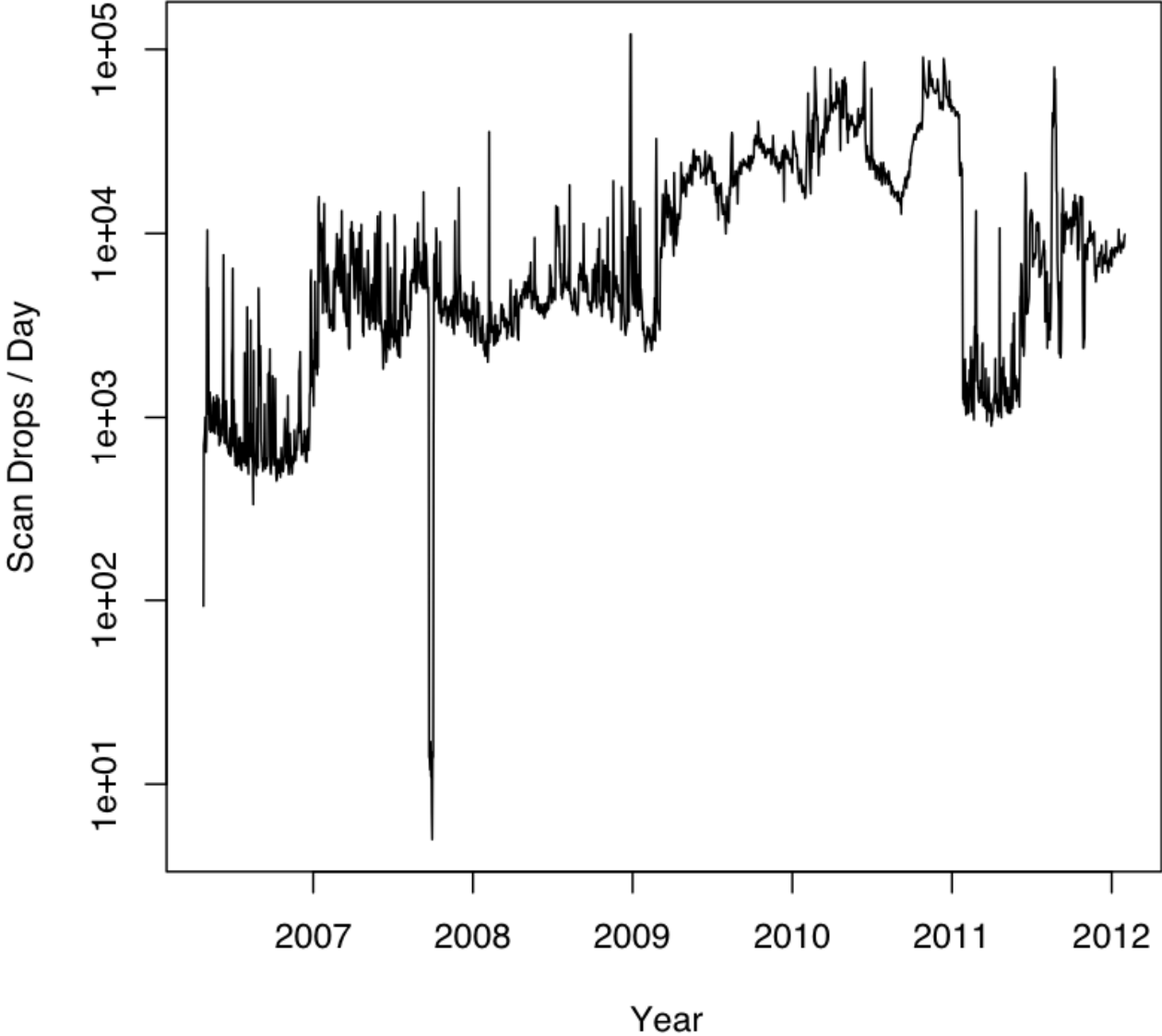


(b) Agobot Sources: UW II

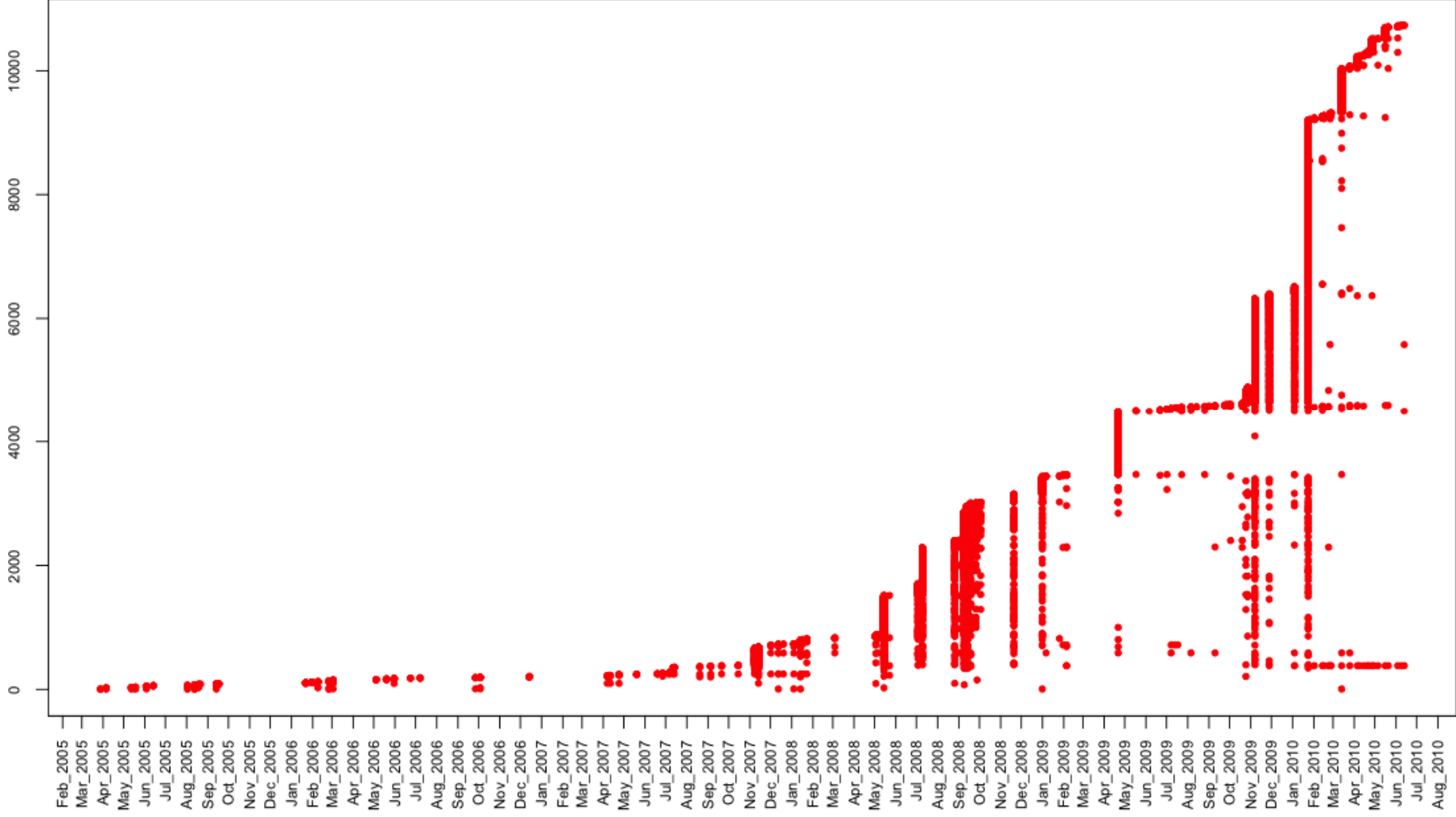
Blocking Scans at LBNL



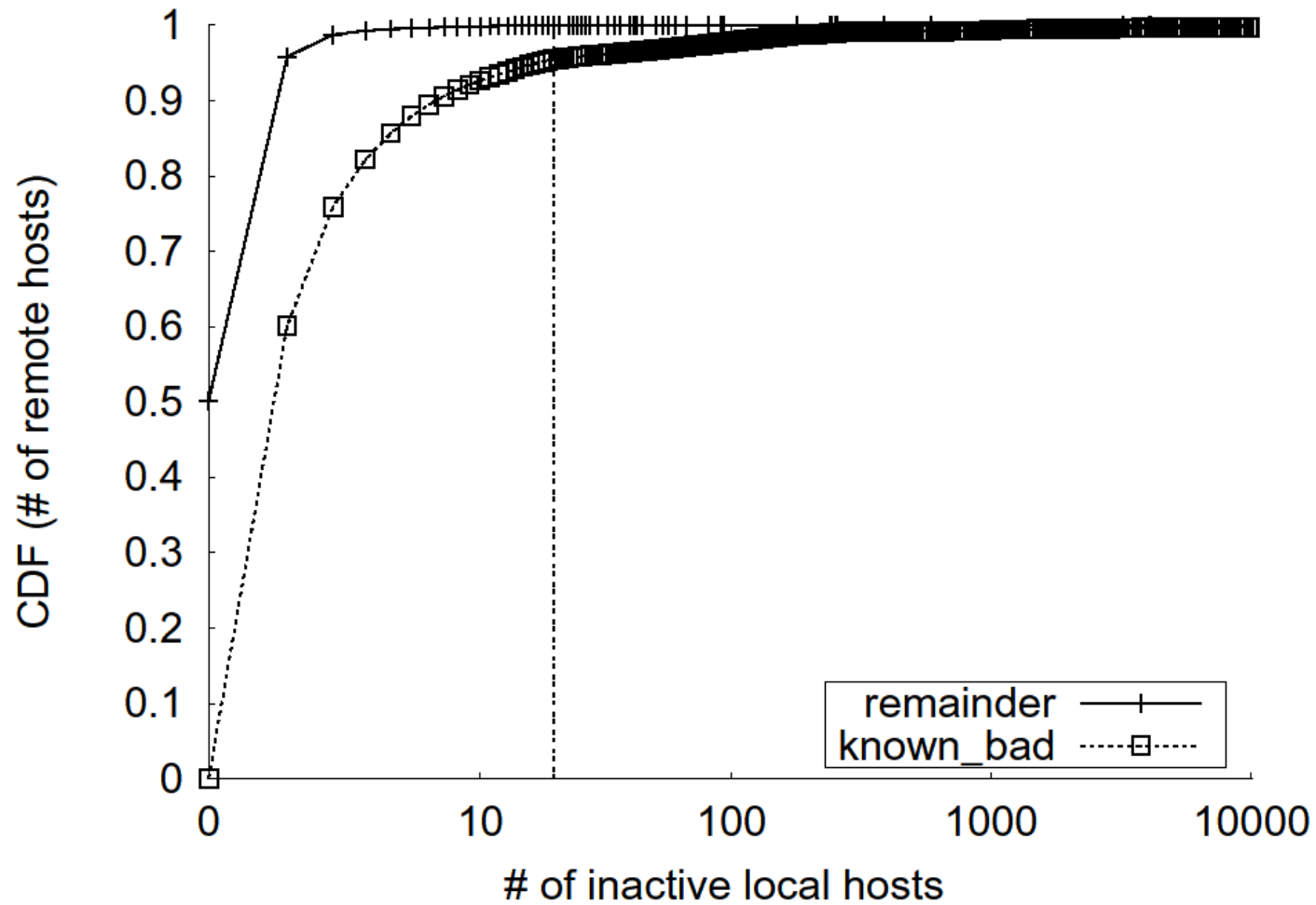
Blocking Scans at LBNL



Anonymized remote network(/24) address

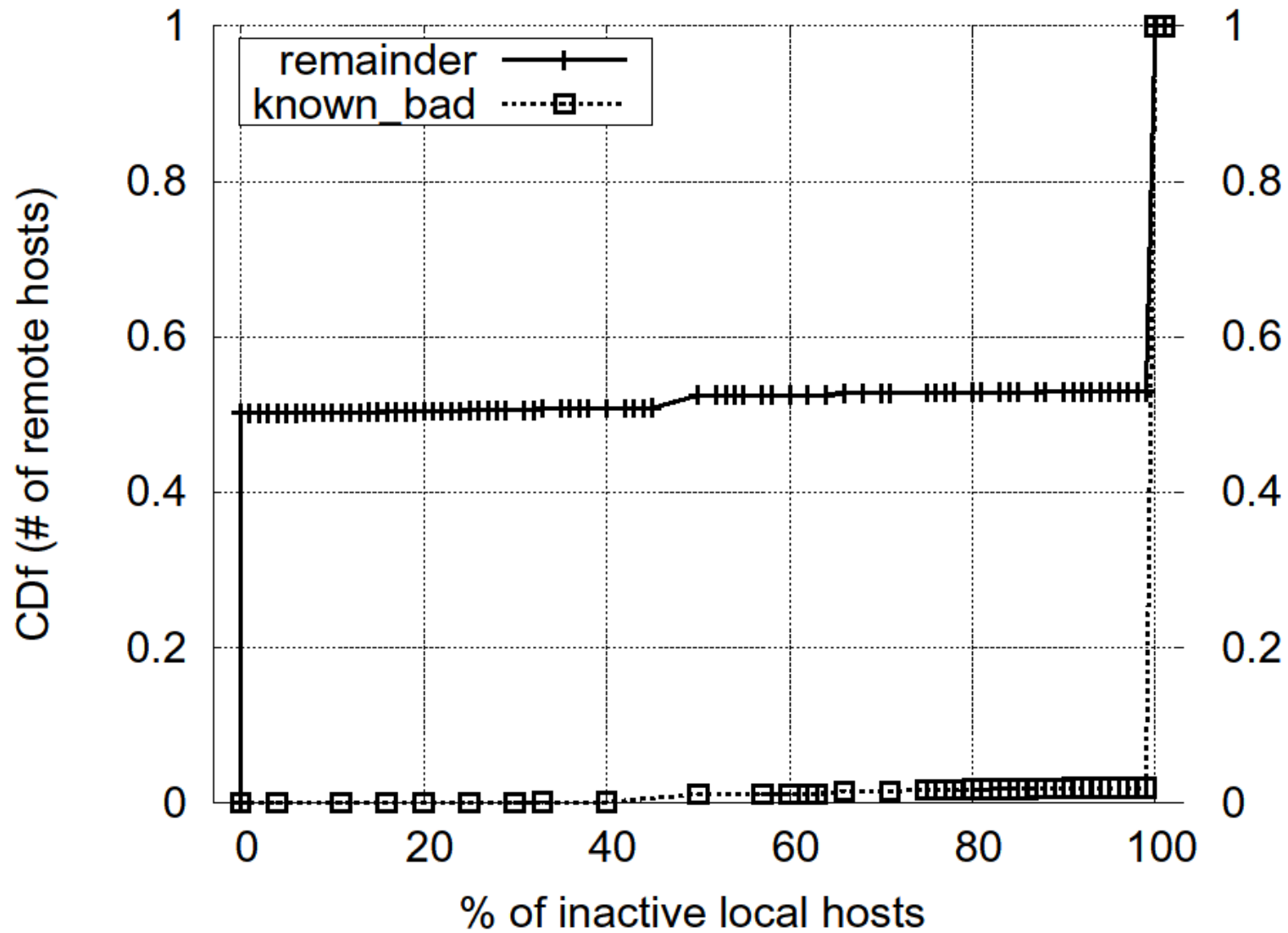


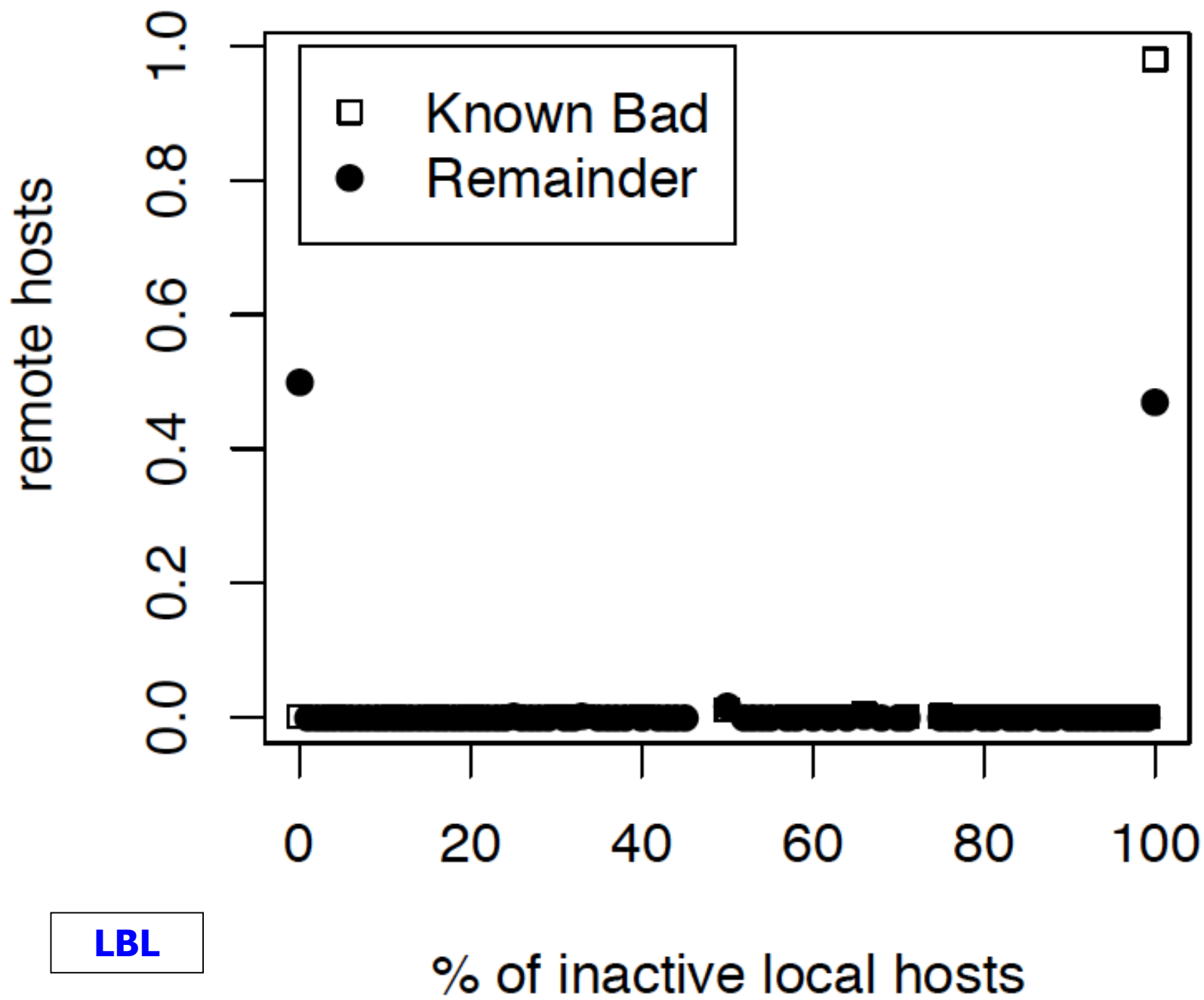
Failed Conn's Not Enough Info



(a) LBL

Failure *Ratio* Much More Distinctive





LBL