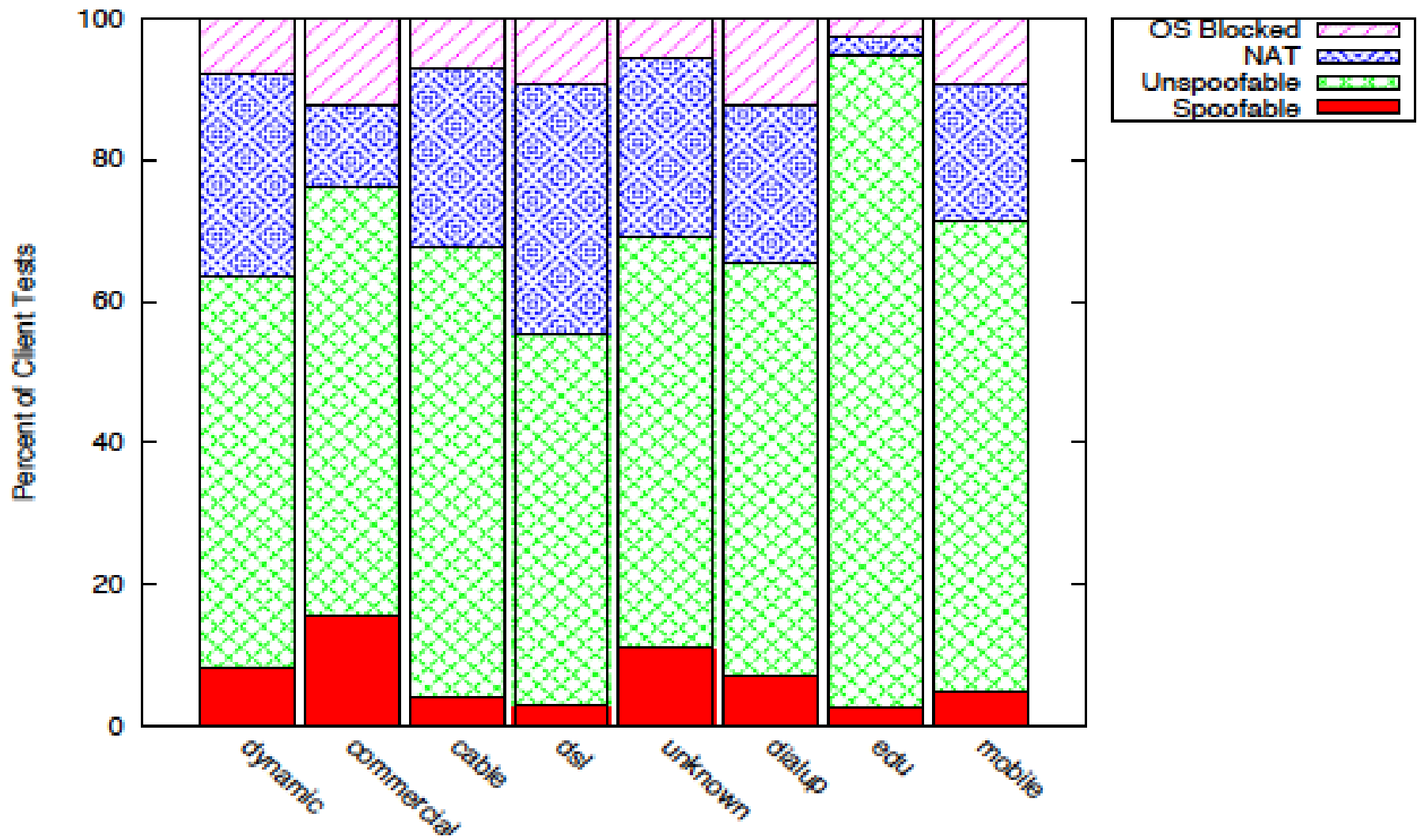


Figure 1. Triangular spam delivery example

**Table 3: Geographic Distribution of Results**

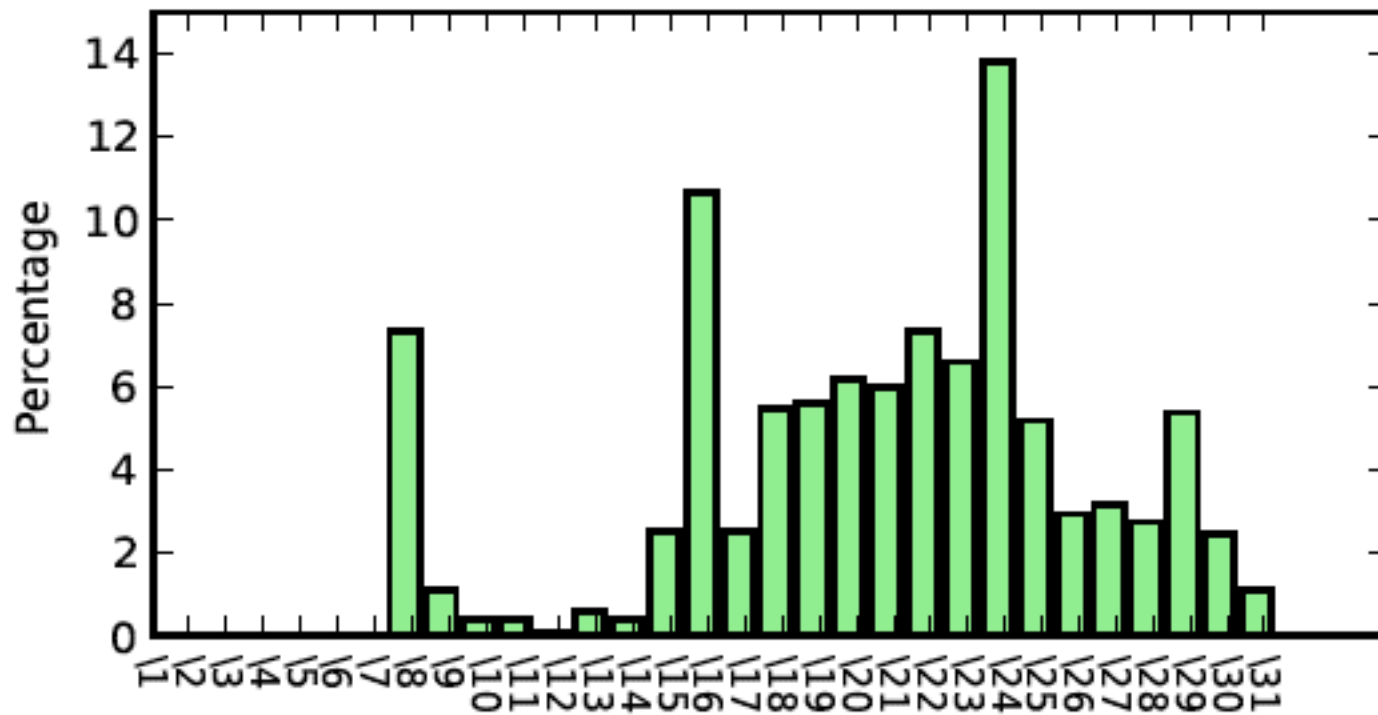
<b>Continent</b>	<b>Spoofing Successes</b>	<b>Spoofing Rate</b>
N. America	498	18.2%
S. America	44	19.4%
Europe	389	19.1%
Asia	289	32.6%
Oceania	40	25.6%
Africa	15	17.4%

Client Class Statistics

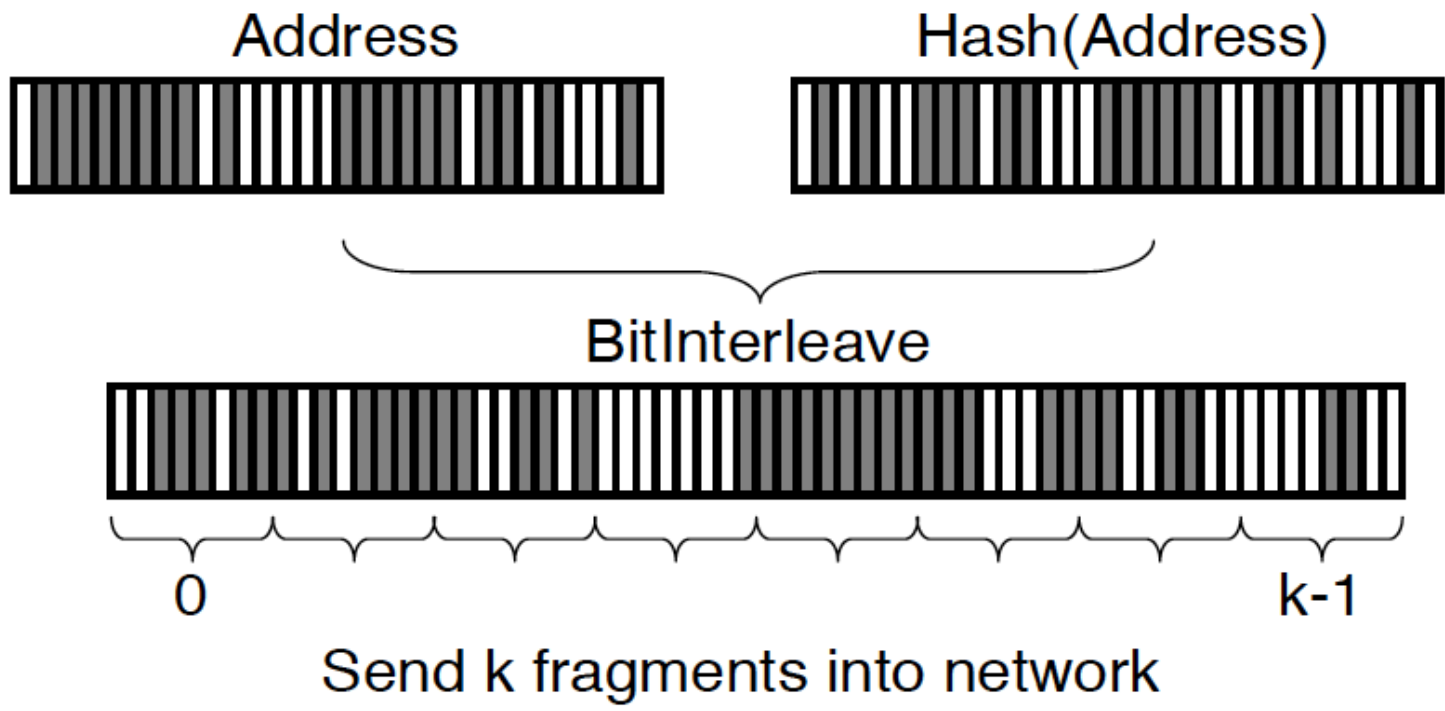


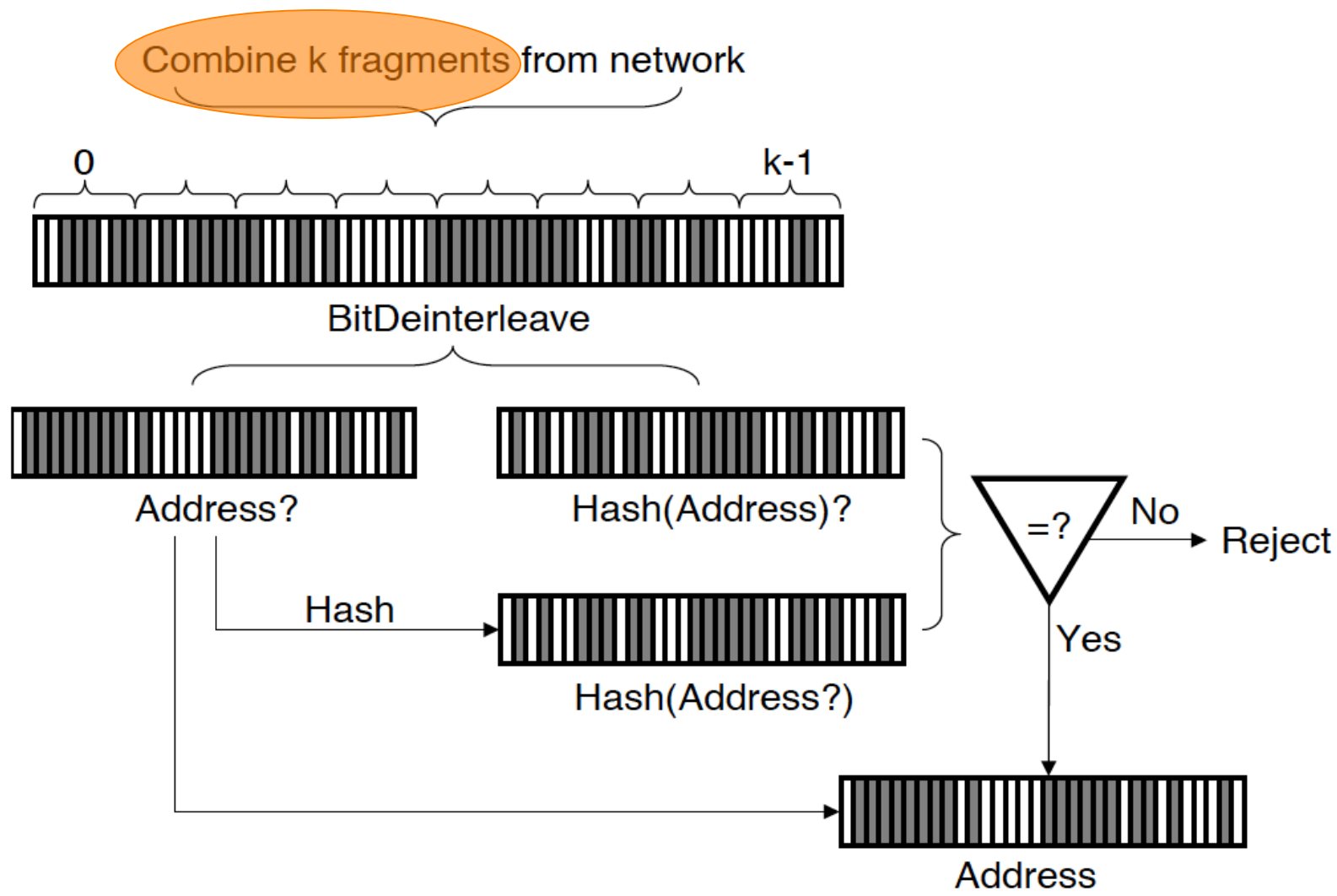
**Table 5: Longitudinal comparison between three-month periods in 2005 and 2009 with 1,100 and 400 distinct clients respectively.**

	Proportion Spoofable		
Metric	2005 (dest. MIT)	2009 (dest. MIT)	2009 (all dests.)
Sessions	18.8±3.2%	29.9±6.0%	31.2±6.0
Netblocks	20.0±3.5%	30.2±6.4%	31.7±6.5
Addresses	5.0±1.8%	11.0±4.1%	11.1±4.1
ASes	23.4±5.0%	31.8±7.6%	34.1±7.6



**Figure 8: Spoofing neighboring addresses: Probability mass of filtering policy granularity**

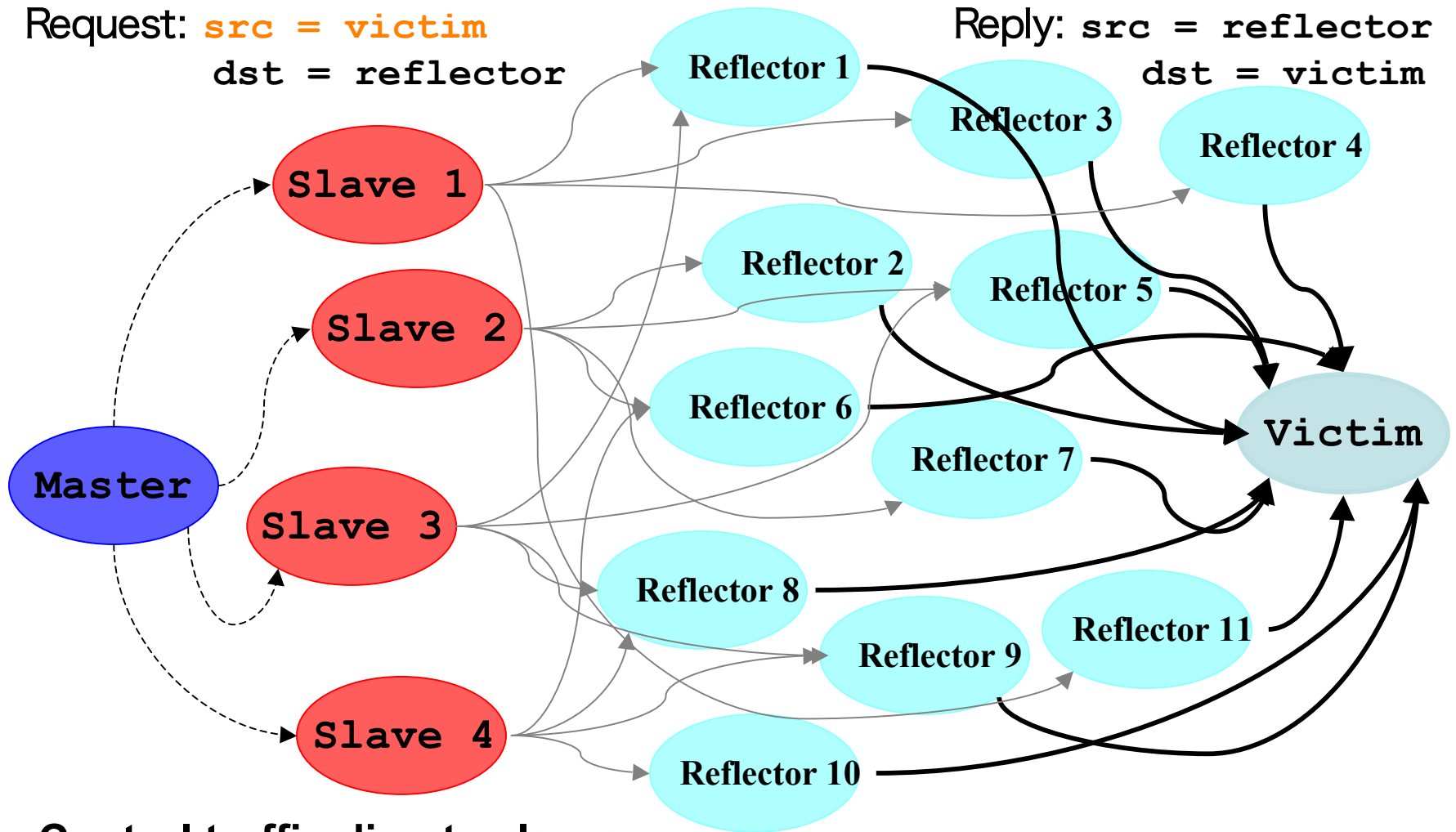




# Diffuse DDoS: Reflector Attack

Request: **src = victim**  
dst = reflector

Reply: **src = reflector**  
dst = victim



Control traffic directs slaves at victim & reflectors

Reflectors send streams of **non-spoofed** but unsolicited traffic to victim