
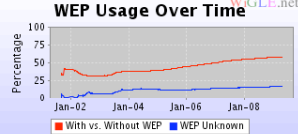
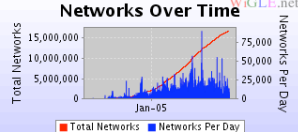


[Home](#) | [Download](#) | [Forums](#) | [Post File](#) | [Query](#) | [Screenshots](#) | [Stats](#) | [Uploads](#) | [Web Maps](#) | [MapPacks/Trees](#) | [Wiki](#) |

 [General Stats](#) | [View Personal Stats](#) | [View Group Stats](#) | [View SSID/Manufacturer Stats](#) | [View Octet/Chan](#)

Registered Users: 83,743
Unique networks in DB: 17,594,315
Unique networks with location: 16,690,195
Unique locations in DB: 975,697,087
Files parsed: 168,671
Networks with WEP: 8,459,116 (48.0%)
Networks without WEP: 6,094,706 (34.6%)
Networks WEP unknown: 3,040,493 (17.2%)
Networks with default SSID: 2,624,777 (14.9%)
New unique networks today: 5,020
New networks today with location: 4,135
Files processed today: 58
Queued files waiting to process: 0




Ranks 1 - 100 of 4473.

1, 2, 3, 4, 5, 6, 7, 8, 9, 10, 11, 12, 13, 14, 15, 16, 17, 18, 19, 20, 21, 22, 23, 24, 25, 26, 27, 28, 29, 30, 31, 32, 33, 34, 35, 36, 37, 38, 39, 40, 41, 42, 43, 44, 45
>>

Rank	Username	Discovered Networks with GPS	Percentage of Total Networks with GPS	All Networks Recorded	Networks This Month with GPS	First Post	Last Post
1	whitedice	1,267,990	(7.597%)	1,687,484	4,154	30-Apr-2006	15-Apr-2009
2	ccie4526	1,114,372	(6.676%)	1,364,744	14,021	27-Jan-2003	16-Apr-2009
3	hratch	948,962	(5.685%)	1,445,874	0	17-Jul-2002	28-Nov-2007
4	mark571	764,807	(4.582%)	1,157,220	0	28-Jun-2005	09-Aug-2007
5	Petzi	579,990	(3.475%)	775,157	0	04-Sep-2003	06-Oct-2008
6	Dutch	407,663	(2.442%)	431,540	0	27-Apr-2004	07-Jan-2009

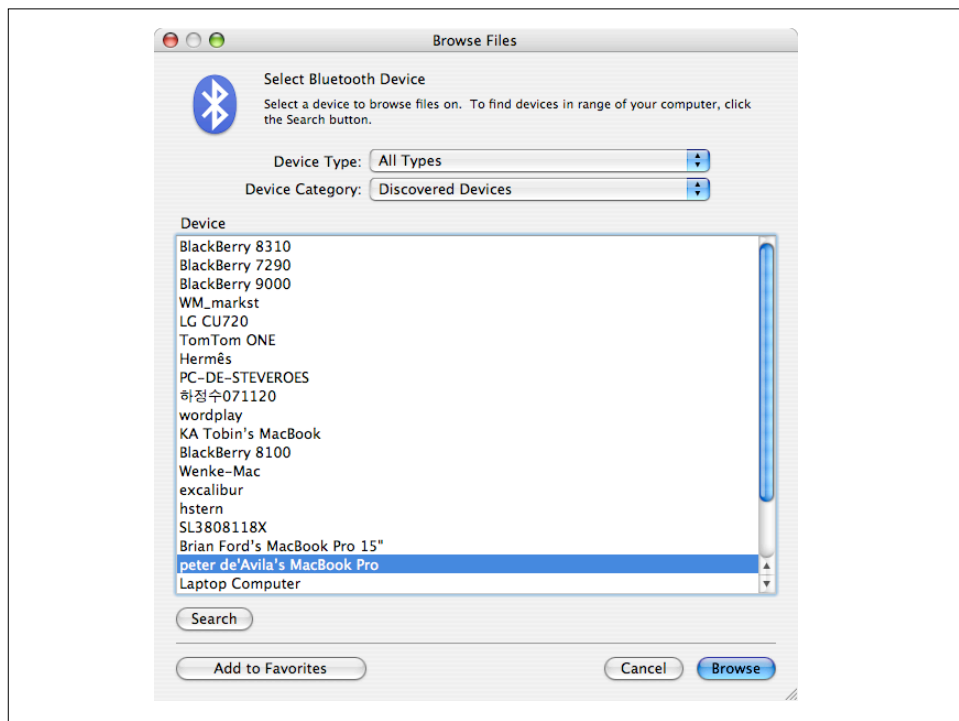
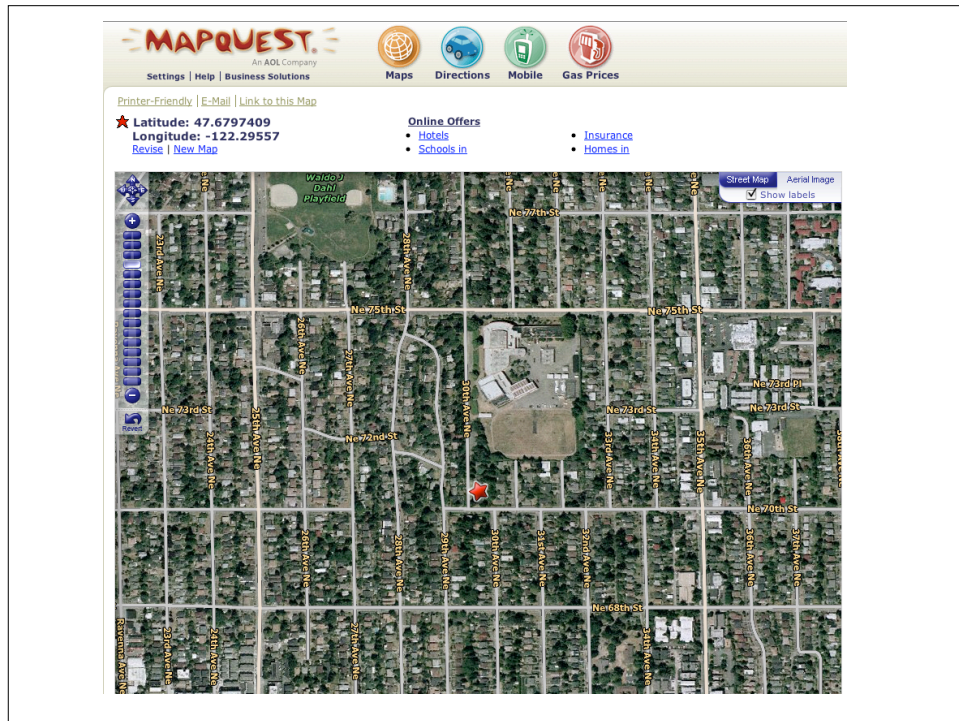
[Home](#) | [Download](#) | [Forums](#) | [Post File](#) | [Query](#) | [Screenshots](#) | [Stats](#) | [Uploads](#) | [Web Maps](#) | [MapPacks/Trees](#) | [Wiki](#) | [Logout](#)

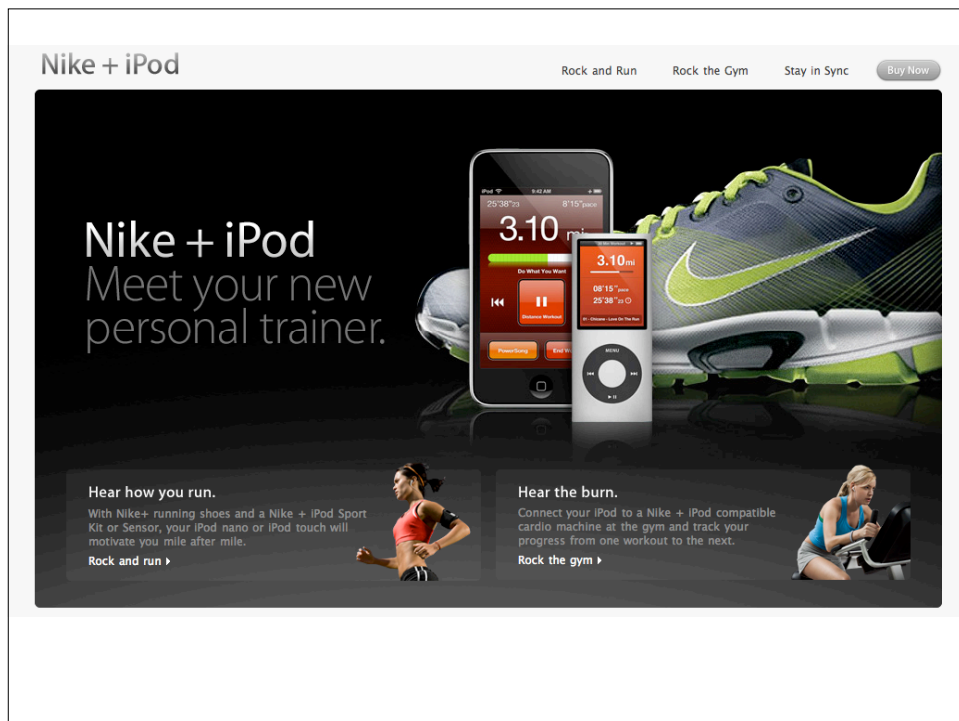
 **Search Results:**

Address Matches: 1
[1] coord: 47.71700287, -122.30154419
[1] name: Seattle
[1] state: WA
[1] zip: 98125
Using first match, with +/- 0.200:
Latitude: 47.51700287 to 47.91700287
Longitude: -122.50154419 to -122.10154419
Showing stations 1 through 2 of this query.

map it	netid	ssid	comment	name	type	freenet	paynet	firsttime	flags	wep	trilat	trilong	dhcp	lastupdt	channel	active	bcninterval	qos	userfound
Get Map	00:40:96:40:bd:f7	djw			Infra	?	?	0000-00-00 00:00:00	0061	Y	47.67974091	-122.29557800	?	20060127110714	6	Y	100	1	N
Get Map	00:40:05:d0:b9:90	djwo48			BBS	?	?	1969-12-31 16:50:23	81	Y	47.70046616	-122.34458160	?	20050121225331	3	Y	100	0	N

WGL Home





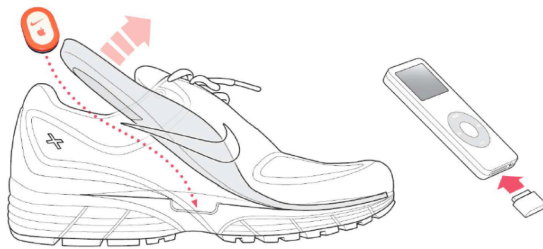


Figure 2: A Nike+iPod sensor in a Nike+ shoe and a Nike+iPod receiver connected to an iPod Nano.

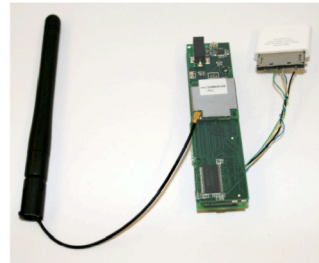


Figure 3: A gumstix-based Nike+iPod surveillance device with wireless Internet capabilities.



Figure 11: A screenshot of our GoogleMaps-based surveillance web application.

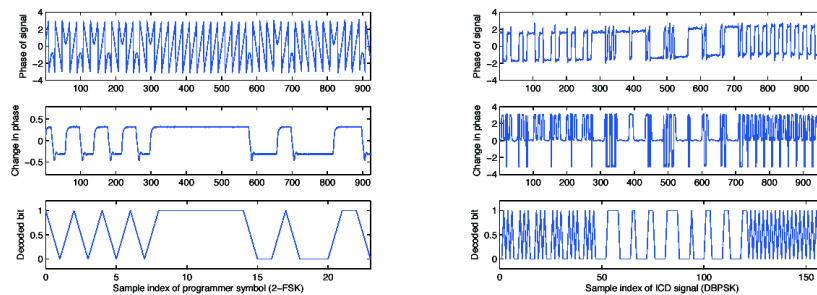


Fig. 3. Demodulating received programmer (left) and ICD transmissions. The top plot in each figure shows the phase of the raw RF signal, downconverted from 175 kHz to baseband. Both 2-FSK and DBPSK encode data by the phase *change* of the signal, pictured in the middle row. The final row shows the decoded bits: in 2-FSK the bit is determined by the sign of the phase change, and in DBPSK by whether it is closer to 0 or π . Note that there are fewer bits than samples; our 500 kHz sampling rate generates 40 samples per programmer symbol and about 6 per ICD symbol.

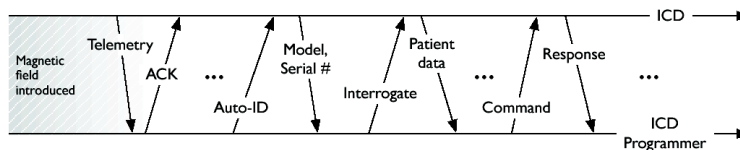


Fig. 4. Timeline of a conversation between an ICD programmer and an ICD. If a programmer is present it will acknowledge each packet automatically. When told by an operator to do so, the programmer asks the ICD for identifying information, which the ICD provides. The programmer then interrogates the ICD for patient data, which the ICD provides. Other commands (such as ICD programming commands) and their responses follow.

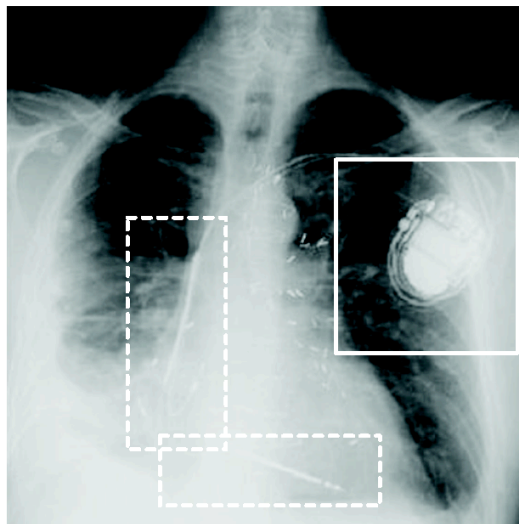


Fig. 1. Chest xray image of an implanted ICD (top right, near shoulder, solid outline) and electrical leads connected to heart chambers (center of rib cage, dotted outline).

Hooligans Attack Epilepsy Patients During Epilepsy Awareness Month

Hooligans attack epilepsy support forum in an attempt to induce seizures amongst the members.

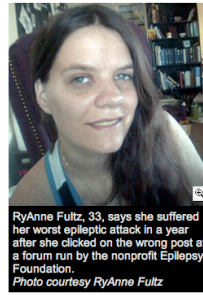
Houston, TX, November 19, 2007 -- (PR.com)-- Internet hooligans launched a malicious attack on Coping With Epilepsy (CWE), an internet web site that serves as a peer support network for people with epilepsy, last Saturday. The perpetrators flooded CWE with hateful messages, images of hardcore porn and, worst of all, animated images with rapidly flashing colors in an attempt to induce seizures in the photosensitive members (and guests) of the site.

The attack lasted several hours as CWE moderators, many of whom are photosensitive themselves, battled to remove the offensive content as fast as it was being posted. The attack ended when CWE administrators arrived and locked down the site.

"I was able to trace back the source of the attack to a handful of sites where the

Hackers Assault Epilepsy Patients via Computer

By Kevin Poulsen 03.28.08



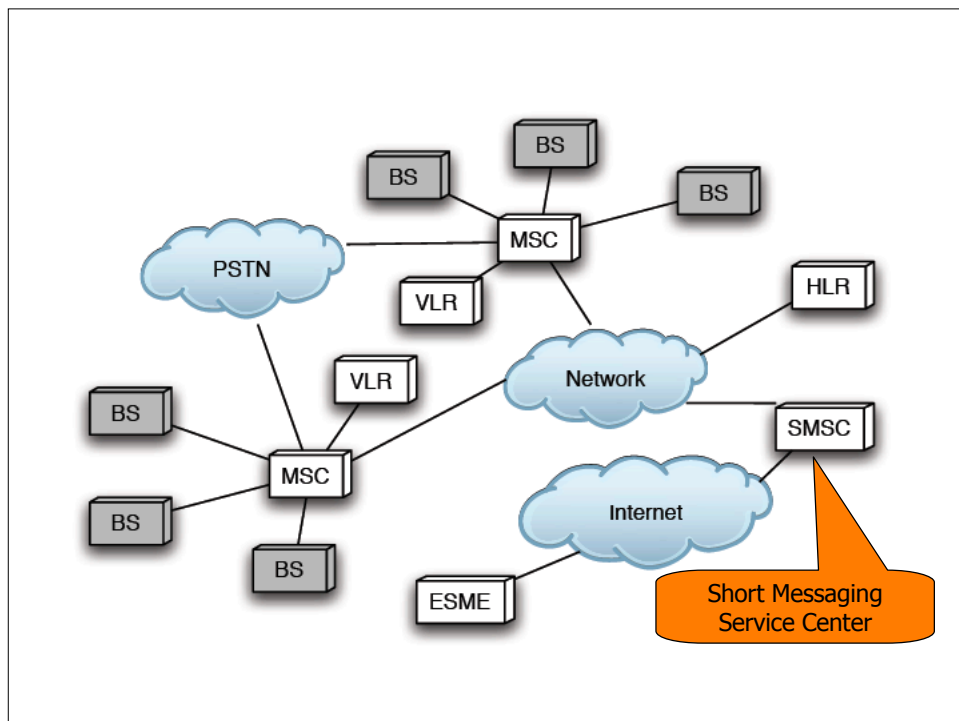
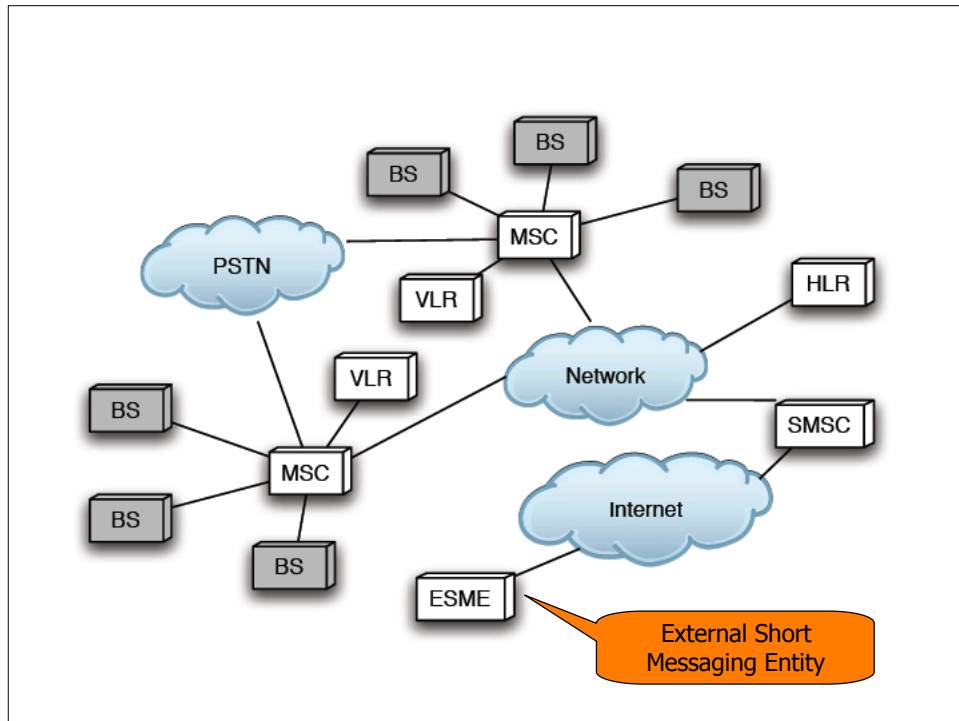
Internet grievers descended on an epilepsy support message board last weekend, using JavaScript code and flashing computer animation to trigger migraine headaches and seizures in some users.

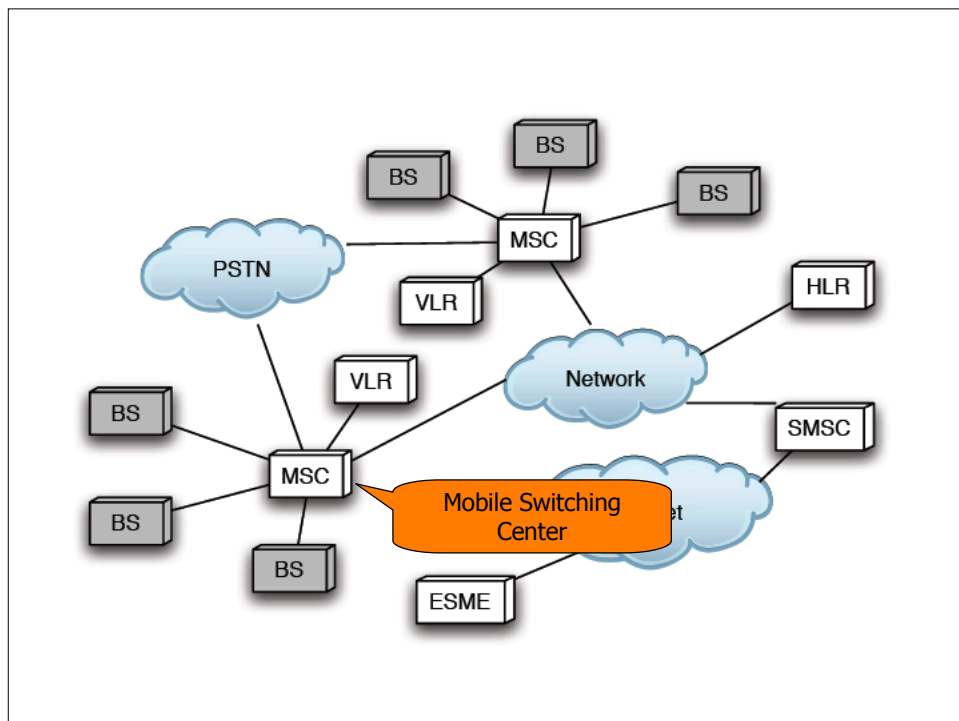
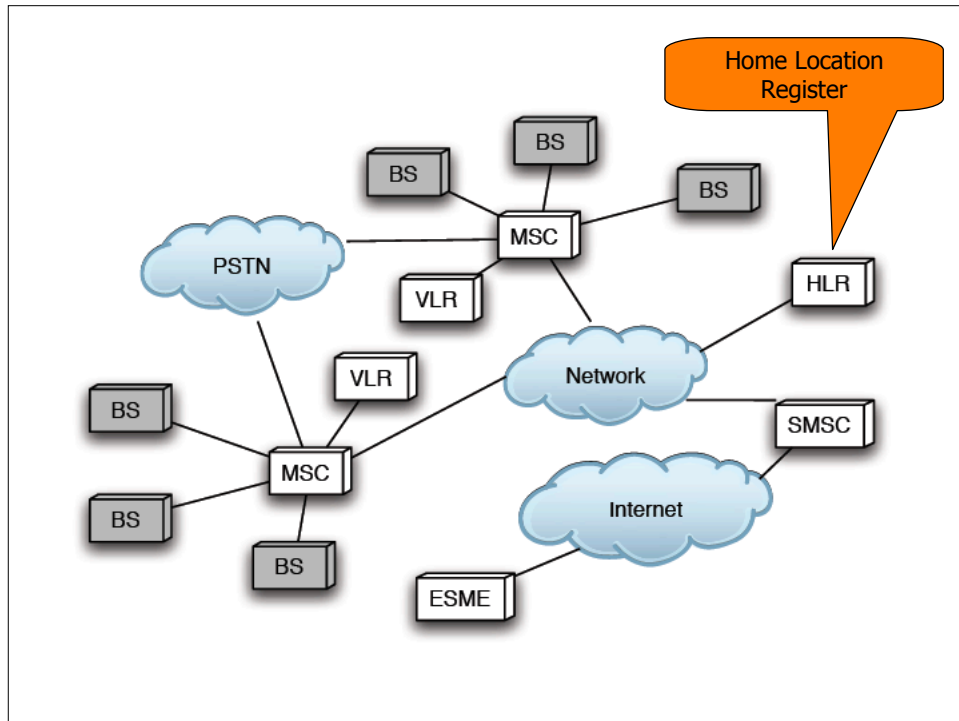
The nonprofit Epilepsy Foundation, which runs the forum, briefly closed the site Sunday to purge the offending messages and to enhance security.

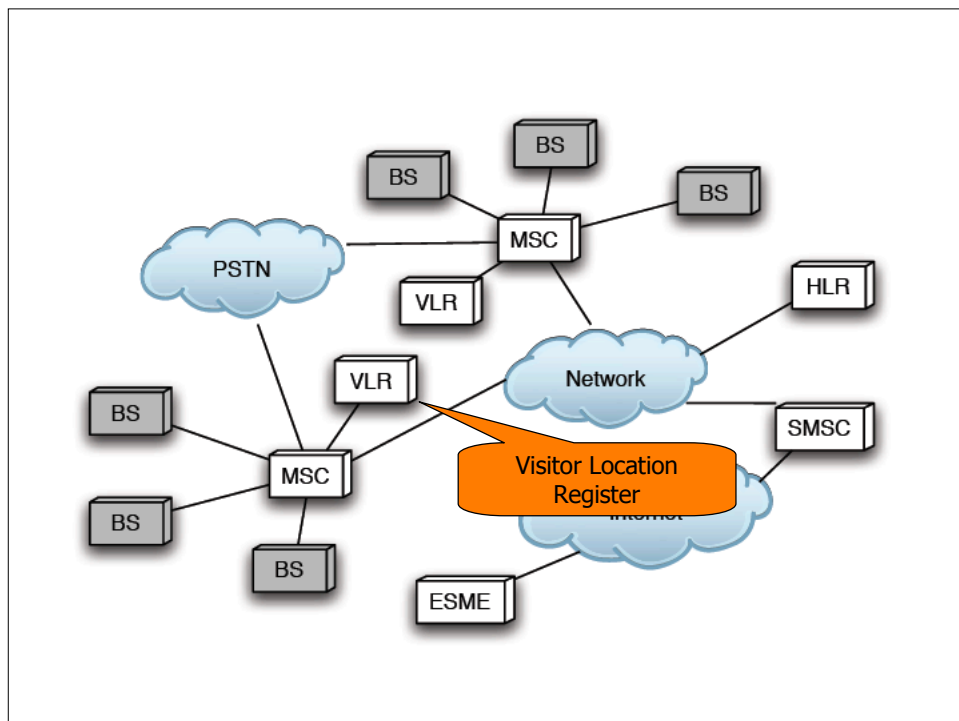
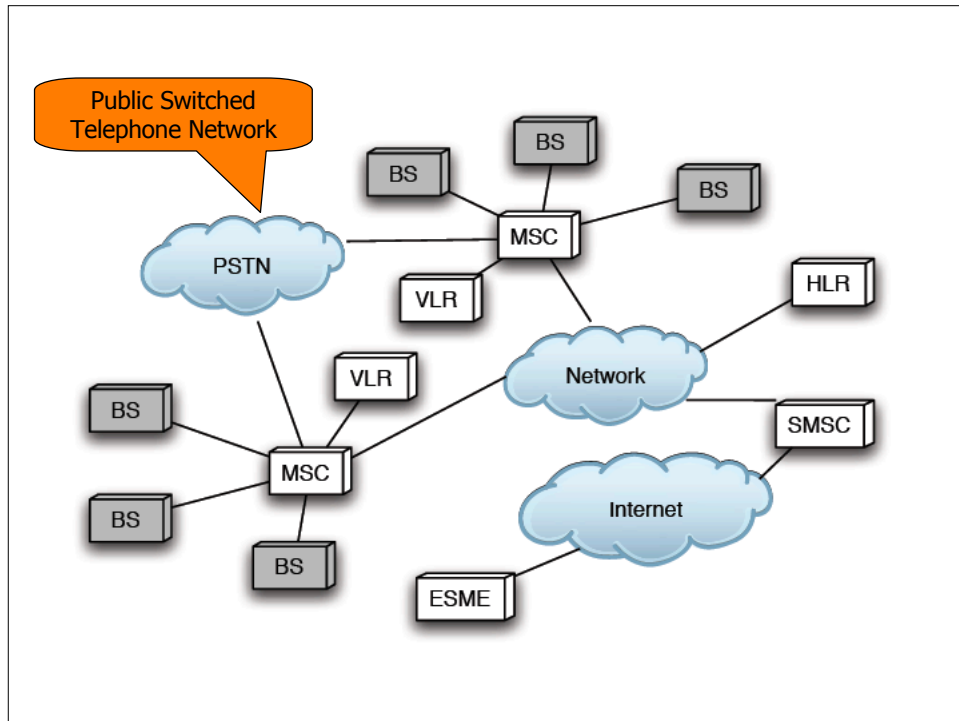
"We are seeing people affected," says David Lowenberg, senior director of web applications at the Epilepsy Foundation, "but fortunately only a handful. It's possible that more people are just not reporting yet -- people are affected by it may not be coming back to the forum so fast."

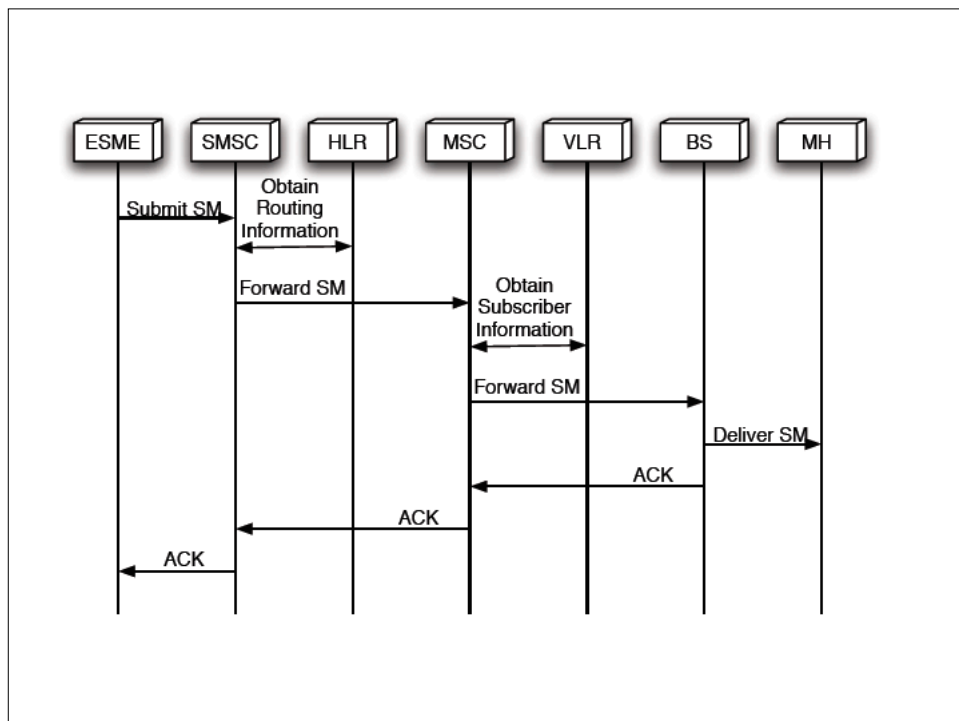
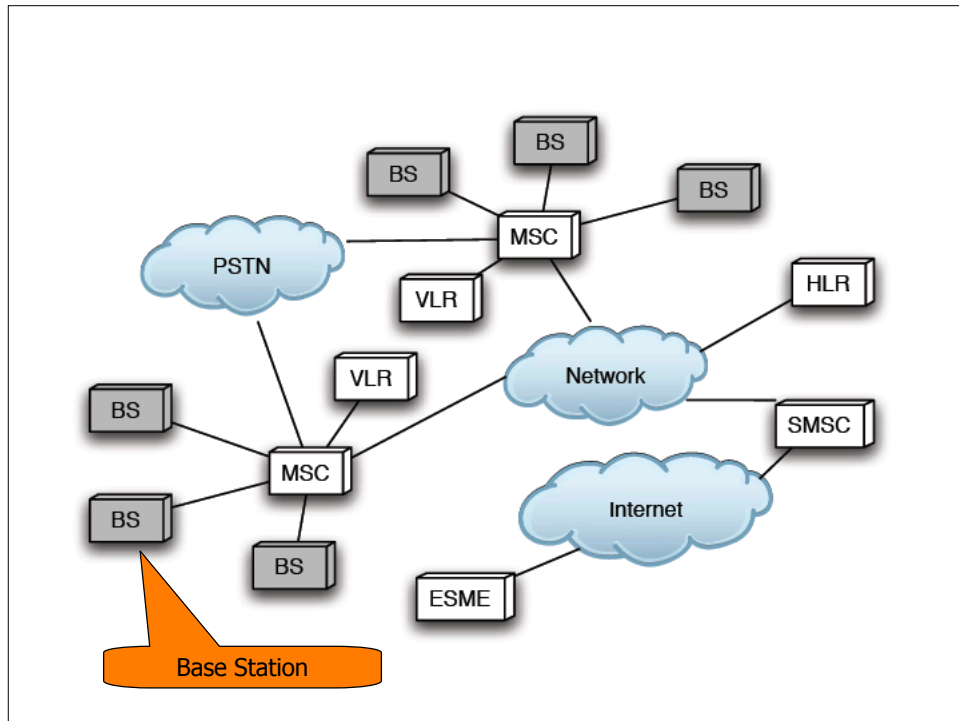


Fig. 8. To simulate implantation in a human, we placed the WISP in a bag containing bacon and ground beef.

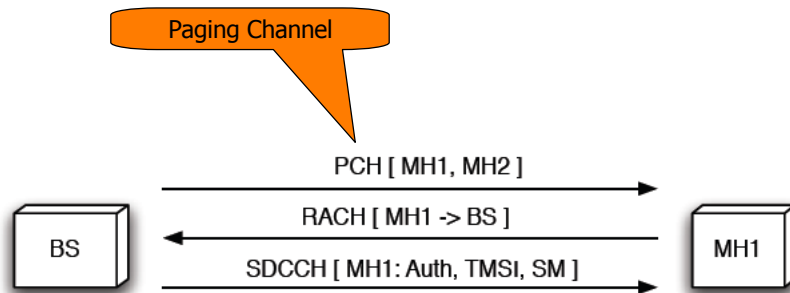




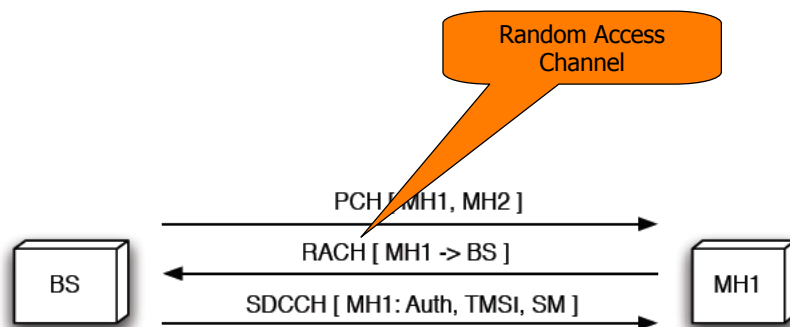




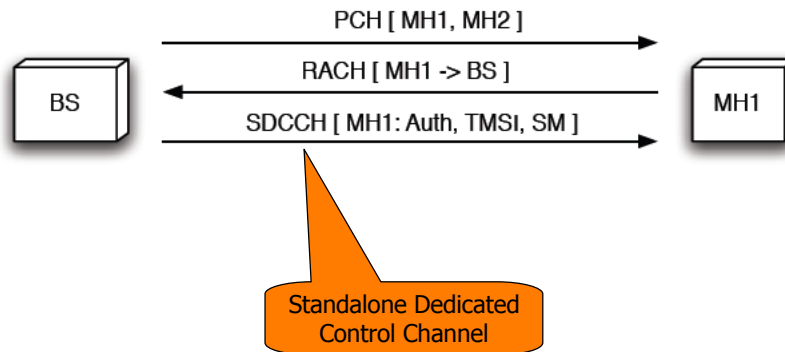
SMS Delivery / Voice Call Establishment



SMS Delivery / Voice Call Establishment



SMS Delivery / Voice Call Establishment



Web Images Maps News Video Gmail more ▼

Google™ cell 510-501-0000...9999 Search Advanced Search Preferences

Web

Berkeley Center for Structural Biology
 Cell Phone: (510) 501-6081. Fax: (510) 486-5664. Email: BSankaran@lbl.gov. Nathan Smith, Scientific Engineering Associate Office location: Building 6, ...
bcsb.lbl.gov/Staff2.htm - 19k - [Cached](#) - [Similar pages](#)

Bay Area Conference
 Dec 1, 2008 ... Cell: 510-501-3433. Fax: 510-286-3935. Stephen Lim, League Coordinator Chinese Christian Schools 750 Fargo Avenue San Leandro, Ca 94579 ...
www.bacbl.org/adboardmembers.php - 55k - [Cached](#) - [Similar pages](#)

January 6, 2009 CONTACTS: Ben Edokpayi, Caltrans 510- 622 0120 ...
 File Format: PDF/Adobe Acrobat - [View as HTML](#)
 510- 501 0446 cell. Jennie Loft, VTA. 408-321-5965 direct. 408-464-7872 cell. FOR IMMEDIATE RELEASE. CALTRANS ACTIVATES HOTLINE FOR RAMP METERS ON ROUTES 85 ...
www.dot.ca.gov/dist4/newsreleases/ramp_metering_hotline090106.pdf - [Similar pages](#)

AB&I Field Sales Representatives
 Cellular: 510/501-5756. Home Fax: 925/736-1404. Voicemail (autopage): 510/633- 5270 ...
 Cell 206-793-7133 greys@braleygray.com, Mack McClain Associates ...
www.abifoundry.com/sales_reps_files/sales_reps.htm - 23k - [Cached](#) - [Similar pages](#)

Balazs Analytical Services > Contact
 Cell: 830 837 4221. Fax: 510 624-4026 steve.popst@balazs.com. Victor Chia - Asia , Pacific
 Cell: 510 501-8721. Fax: 510 624-4026 victor.chia@balazs.com ...
www.balazs.com/en/about-us/contact.html - 11k - [Cached](#) - [Similar pages](#)

Locations - Pike Electric Corporation
 Cell: 510-501-4374. Fax: 925-275-6579. E-mail: mpourcyrous@pike.com. George Culbertson, PE Business Line Manager, Northwest Region ...
www.pike.com/OurCompany/Locations.aspx - 40k - [Cached](#) - [Similar pages](#)

Welcome to The Warm Springs Business and Community Association
 Cell: 510-363-7689 email: daniel@djrefrigeration.com. Fax: 510-252-9434 Phone: 510-501-3130 email: JNIFLWR5@aol.com, QCartridge. Ink Cartridges ...
www.wsbsca.com/members.html - 59k - [Cached](#) - [Similar pages](#)